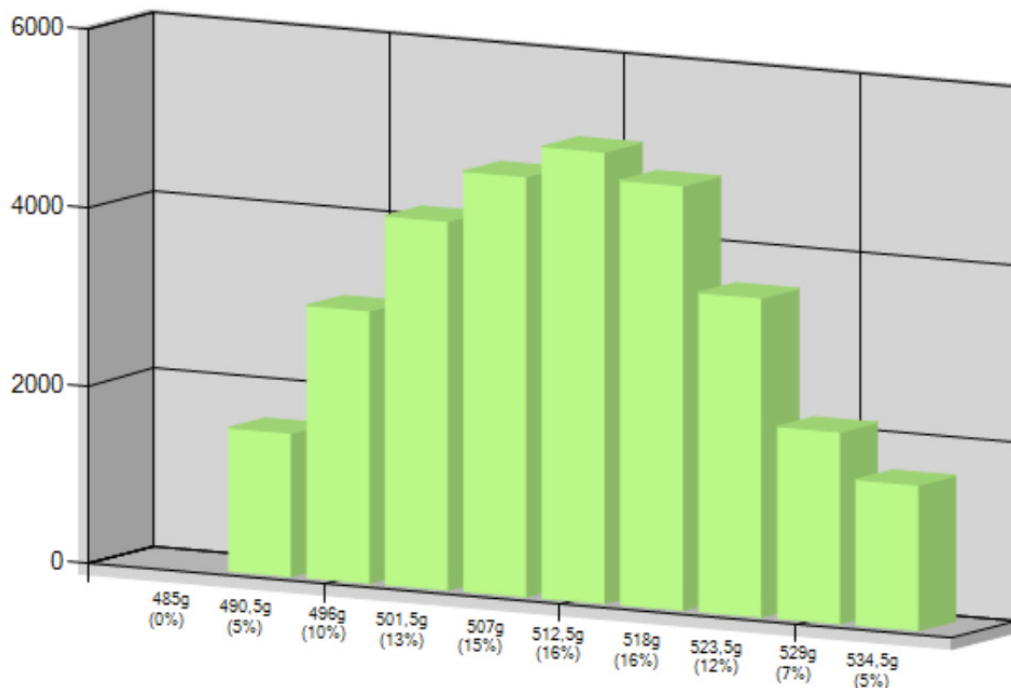




What is NEMESIS Analytics ?

Analytics is a windows® software that offers advanced report capabilities and it integrates the full traceability of the products. Analytics is compatible with all NEMESIS checkweigher, weigh-price labelers and grading systems.



Weights distribution chart. It shows how weights are spread around the target weight for a sample batch.

What is NEMESIS Data manager ?

NEMESIS Data manager is a windows® service running on both touchscreen and desktop computer / server.

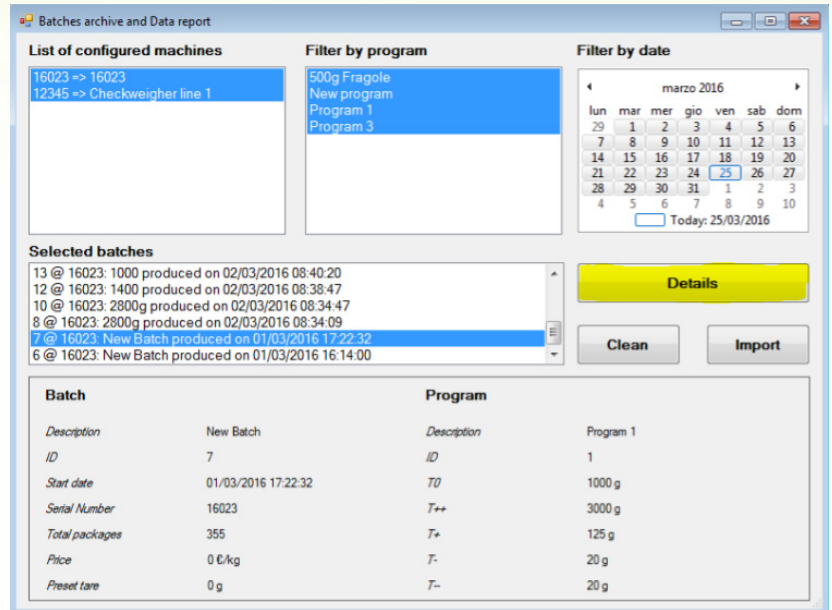
It makes available different options to capture the data:

- **USB flash drive:** just inserting the USB into the touchscreen the data is automatically copied to the drive. An open SQLite database containing data of the weights, events and batches is exported. These information can be easily imported with Analytics software into the SQL database.
- **Ethernet:** through regular cable connection or WiFi is possible to send in real time information to service running on the desktop computer / server. A SQL database is generated and it contains data of the weights, events and batches.
- **Open protocol:** through TCP/IP a data protocol containing customized information can be enabled. This makes possible the use of custom software or to gather checkweigher data directly into the company management software.

Extremely easy to use

Both NEMESIS Analytics and Data manager doesn't require any configuration. They are just ready to go after you install them. The only configuration required is for the SQL database engine.

Browsing the collected data is easy as well thanks to the hundreds of SQL queries built into the software. It's enough to select any filter (Date & Time, Product type, Batch ID, Machine ID, ...) and the data is immediately ready to check.



List of configured machines

- 16023 => 16023
- 12345 => Checkweigher line 1

Filter by program

- 500g Fragole
- New program
- Program 1
- Program 3

Filter by date

marzo 2016

lun	mar	mer	gio	ven	sab	dom
29	1	2	3	4	5	6
7	8	9	10	11	12	13
14	15	16	17	18	19	20
21	22	23	24	25	26	27
28	29	30	31	1	2	3
4	5	6	7	8	9	10

Today: 25/03/2016

Selected batches

- 13 @ 16023: 1000 produced on 02/03/2016 08:40:20
- 12 @ 16023: 1400 produced on 02/03/2016 08:38:47
- 10 @ 16023: 2800g produced on 02/03/2016 08:34:47
- 8 @ 16023: 2800g produced on 02/03/2016 08:34:09
- 7 @ 16023: New Batch produced on 01/03/2016 17:22:32
- 6 @ 16023: New Batch produced on 01/03/2016 16:14:00

Batch

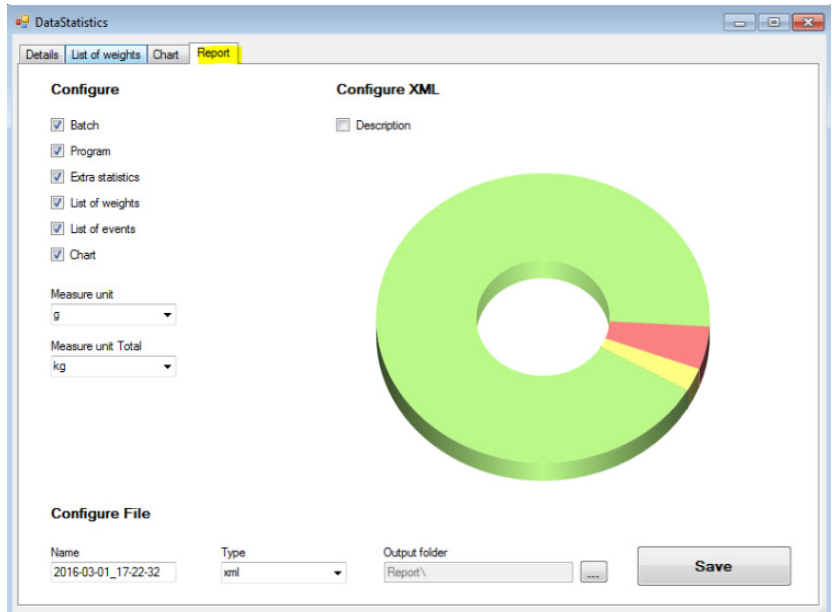
Description	New Batch	Description	Program 1
ID	7	ID	1
Start date	01/03/2016 17:22:32	T0	1000 g
Serial Number	16023	T++	3000 g
Total/packages	355	T+	125 g
Piece	0 €/kg	T-	20 g
Preset tare	0 g	T-	20 g

Customized report

While checking a report, it's very easy to export the data into a standard file like PDF, XML or CSV.

Thanks to a very detailed options list, it is possible to select only the data that need to be exported making – this way – a more readable and compact report.

Furthermore, it is possible to gather data from multiple batches into a single report to measure the overall efficiency of a production shift or an entire month.



Configure XML

Batch

Program

Extra statistics

List of weights

List of events

Chart

Measure unit: g

Measure unit Total: kg

Description

Configure File

Name: 2016-03-01_17-22-32

Type: xml

Output folder: Report\

Save

Multiple machines, error proof

There is no limit to the number of machines connected simultaneously to the system. The service NEMESIS Data manager automatically understand and detect new machines connected gathering all information into a single SQL database.

Even if the server goes down or there are network errors, it's possible to synchronize the database with the USB flash drive recovering any data loss during the downtime.